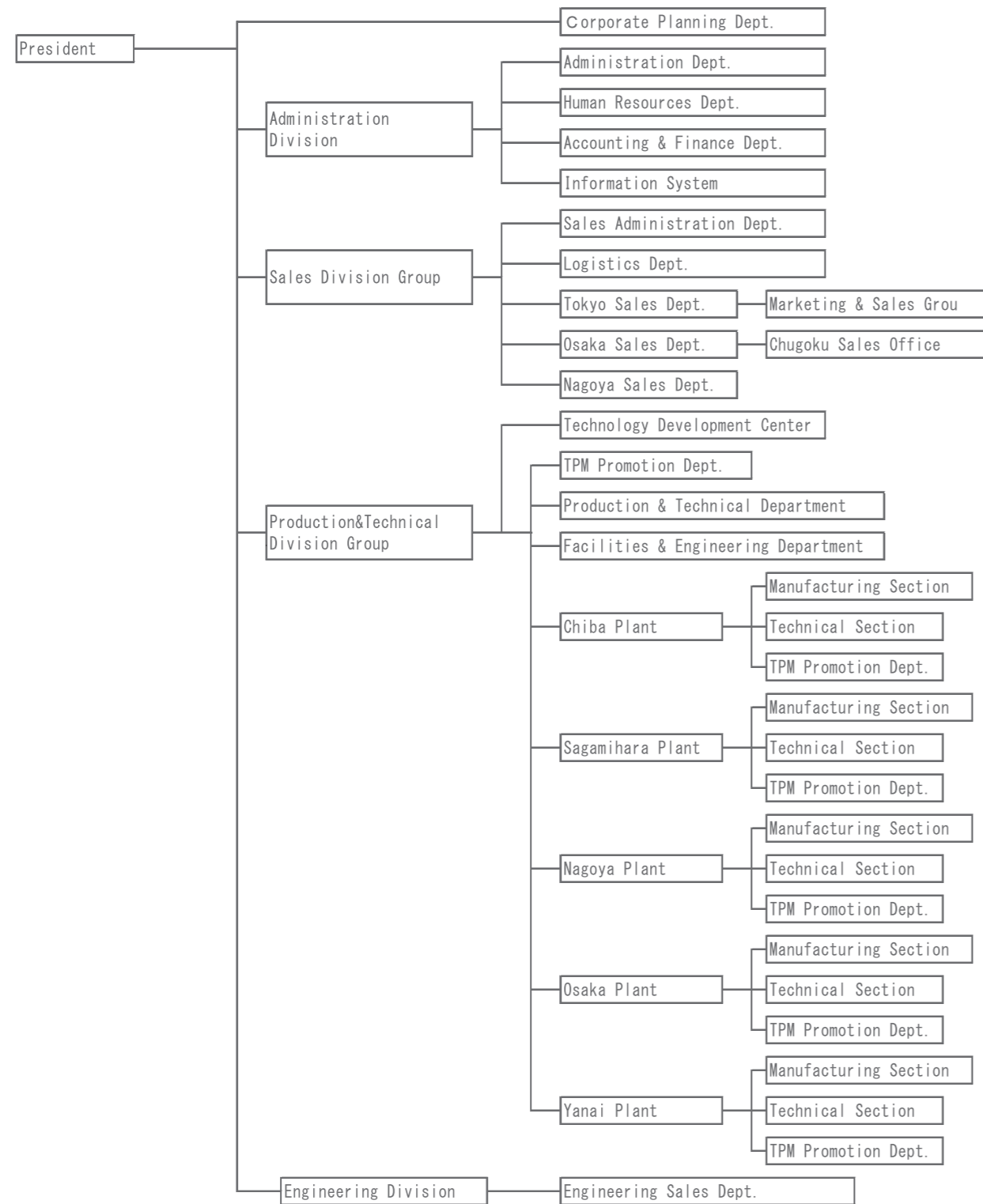




Nippon Steel Drum Co., Ltd. Company Outline



Subsidiary Companies

<p>■ Nippon Steel Drum Techno Co., Ltd. Representative Director and President Makoto Takenaka 74-1, Koteshicho, Hanamigawa-Ku, Chiba Prefecture, Japan TEL (043) 298-5300 FAX (043) 298-5055</p>	<p>(Major business) Design, manufacture and sales of filling systems of containers and drum manufacturing equipment</p>
---	--

Nippon Steel Drum Co., Ltd.

Company Name: NIPPON STEEL DRUM CO.,LTD.
Head office: 5-7, 1 Chome, Kameido, Koto-Ku, Tokyo, Japan, 136-0071
 TEL (03) 5627-2311 FAX (03) 5627-2323
<http://www.drum.nipponsteel.com>
U R L :
Established: 2nd of October, 1934
Capital: JPY 1,654,000,000
Major stock: Nippon Steel Corporation
Business lines: Manufacture and sales of steel drum
 Manufacture and sales of special receptacles such as tanks and containers
 Engineering for filling and conveying system of container such as drum, 18L can and cubic container

Divisions

■ Technology Development Center 7-1, 5Chome, Nishihashimoto, Midori-Ku, Sagamihara, Kanagawa Prefecture, Japan, 252-0131
 TEL (042) 779-1395 FAX (042) 779-1390

■ Sales Division Groups

Sales Administration Dept. 5-7, 1 Chome, Kameido, Koto-Ku, Tokyo, Japan, 136-0071
 TEL (03) 5627-2312 FAX (03) 5627-2323

Tokyo Sales Dept. 5-7, 1 Chome, Kameido, Koto-Ku, Tokyo, Japan, 136-0071
 TEL (03) 5627-2313 FAX (03) 5627-2321

Marketing & Sales Group 5-7, 1 Chome, Kameido, Koto-Ku, Tokyo, Japan, 136-0071
 TEL (03) 5627-2314 FAX (03) 5627-2321

Osaka Sales Dept. 4-10, 2 Chome, Imabashi, Chuo-Ku, Osaka, Japan, 541-0042
 TEL (06) 4706-0001 FAX (06) 4706-0010

Chugoku Sales Office 3-1-2, Minamihama, Yanai, Yamaguchi Prefecture, Japan, 742-0023
 TEL (0820) 24-1136 FAX (0820) 24-1138

Nagoya Sales Dept. 13-18, 2 Chome, Meiekinami, Nakamura-Ku, Nagoya, Aichi Prefecture, Japan, 450-0003
 TEL (052) 565-0411 FAX (052) 565-0417

■ Plant

Chiba Plant 13, Anesakikaigan, Ichihara, Chiba Prefecture, Japan, 299-0107
 TEL (0436) 61-1291 FAX (0436) 62-4531

Sagamihara Plant 7-1, 5Chome, Nishihashimoto, Midori-Ku, Sagamihara, Kanagawa Prefecture, Japan, 252-0131
 TEL (042) 772-2151 FA (042) 774-3359

Nagoya Plant 28-2, Shinpomachi, Tokai, Aichi Prefecture, Japan, 476-0005
 TEL (052) 603-3411 FAX (052) 601-4333

Osaka Plant 1-21, Rinkaicho, Izumiotsu, Osaka Prefecture, Japan, 595-0075
 TEL (0725) 33-6301 FAX (0725) 21-0969

Yanai Plant 3-1-2, Minamihama, Yanai, Yamaguchi Prefecture, Japan, 742-0023
 TEL (0820) 24-1135 FAX (0820) 24-1137

■ Engineering Division
 Engineering Sales Div. 5-7, 1 Chome, Kameido, Koto-Ku, Tokyo, Japan, 136-0071
 TEL (03) 5627-2315 FAX (03) 5627-2323

Representative Director & President Koshiro Chikamatsu
 Managing Director, Member of the Board Tatsuya Yamashita
 Director, Member of the Board Kiyosumi Fujii
 Senior Advisor
 Director, Member of the Board Einosuke Kan
 Corporate Auditor Renshi Itou
 Corporate Auditor Yasuhiro Nakata
 Managing Director Tetsuya Sagayama
 Director Makoto Takenaka
 Director Hiroyuki Magome
 Director Norikazu Kanazawa
 Director Terutaka Senbon
 Director Jun Nakakubo

Main Banks MUFG Bank, Ltd., Sumitomo Mitsui Banking Corporation

Major Customers Public agencies, Petroleum, Petroleum & Chemical, Chemical, and Foods industries and trading companies

History

October, 1934 : Nippon Steel Drum Works Ltd. was established.
 April, 1959 : Sagamihara Plant was built in Sagamihara-shi, Kanagawa Prefecture
 April, 1964 : Tokai Steel Drum Co., Ltd. was established in Tokai-shi, Aichi Prefecture.
 April, 1968 : Kansai Steel Drum Co., Ltd. was established in Izumiotsu-shi, Osaka Prefecture.
 October, 1968 : Chiba Plant was built in Ichihara-shi, Chiba Prefecture
 April, 1973 : Kansai Steel Drum was merged and acquired by Tokai Steel Drum and the name of the Company was changed to Seitetsu Steel Drum Co., Ltd.
 July, 1973 : Tokyo Works was closed.
 October, 1974 : Seitetsu Steel Drum was merged and acquired by Nippon Steel Drum Works Ltd. The name of the Company was changed to Nippon Steel Drum Co., Ltd., and the nation wide business activities were started with its sales offices in the head office and Osaka, and four plants of Chiba, Sagamihara, Nagoya and Osaka.
 December, 1988 : Technology Development Center was established in Sagamihara Plant.
 March, 1995 : Osaka Plant acquired ISO 9002 certification, from then on, Chiba, Sagamihara, and Nagoya Plants also acquired
 September, 1995 : Nippon Steel Drum Co., Ltd was listed on the Second Section of the Tokyo Stock Exchange Market.
 September, 1998 : For the expansion of the engineering business, fully owned Nippon Steel Drum Techno Co., Ltd. was established for the design, manufacture and sales of filling system for containers that has a close relation with steel drum.
 August, 2002 : Acquired accreditation of environmental management systems (ISO14001).
 July, 2007 : NSD has become a 100% subsidiary of Nippon Steel Corp. by the share exchange procedure effected on July31, 2007. Shares of NSD were delisted on July25, 2007 accordingly.
 October, 2012 : Corporate name changed to Nippon Steel & Sumikin Drum Co., Ltd. along with Nippon Steel & Sumitomo Metal Corporation, the integrated company of the parent company, Nippon Steel Corporation and Sumitomo Metal Industries, Ltd. Name of Nippon Steel Drum Techno Co., Ltd. (100% owned subsidiary) changed to Nippon Steel & Sumikin Drum Techno Co., Ltd.
 October, 2016 : Chiba, Nagoya Plants acquired Award for TPM Excellence, Category A from Japan Institute of Plant Maintenance, from then on, Osaka, Sagamihara Plants and Sanyo Steel Drum Industry Co., Ltd. also acquired
 April, 2019 : Corporate name changed to Nippon Steel Drum Co., Ltd. along with the name change of the parent company, Nippon Steel & Sumitomo Metal Corporation to Nippon Steel Corporation, name change, Name of Nippon Steel & Sumikin Drum Techno Co., Ltd. (100% owned subsidiary) changed to Nippon Steel Drum Techno Co., Ltd.
 December, 2021 : Yanai Plant was built in Yanai-shi, Yamaguchi Prefecture
 July, 2023 : Sanyo Steel Drum Industry Co., Ltd., a fully owen subsidiary of Nippon Steel Drum Co., Ltd. was merged by Nippon Steel Drum Co., Ltd.

	Number of employees	Average age	Average length of service in years
March, 2021	237	43.4	16.7
March, 2022	245	43.2	16.0
March, 2023	250	42.6	16.2