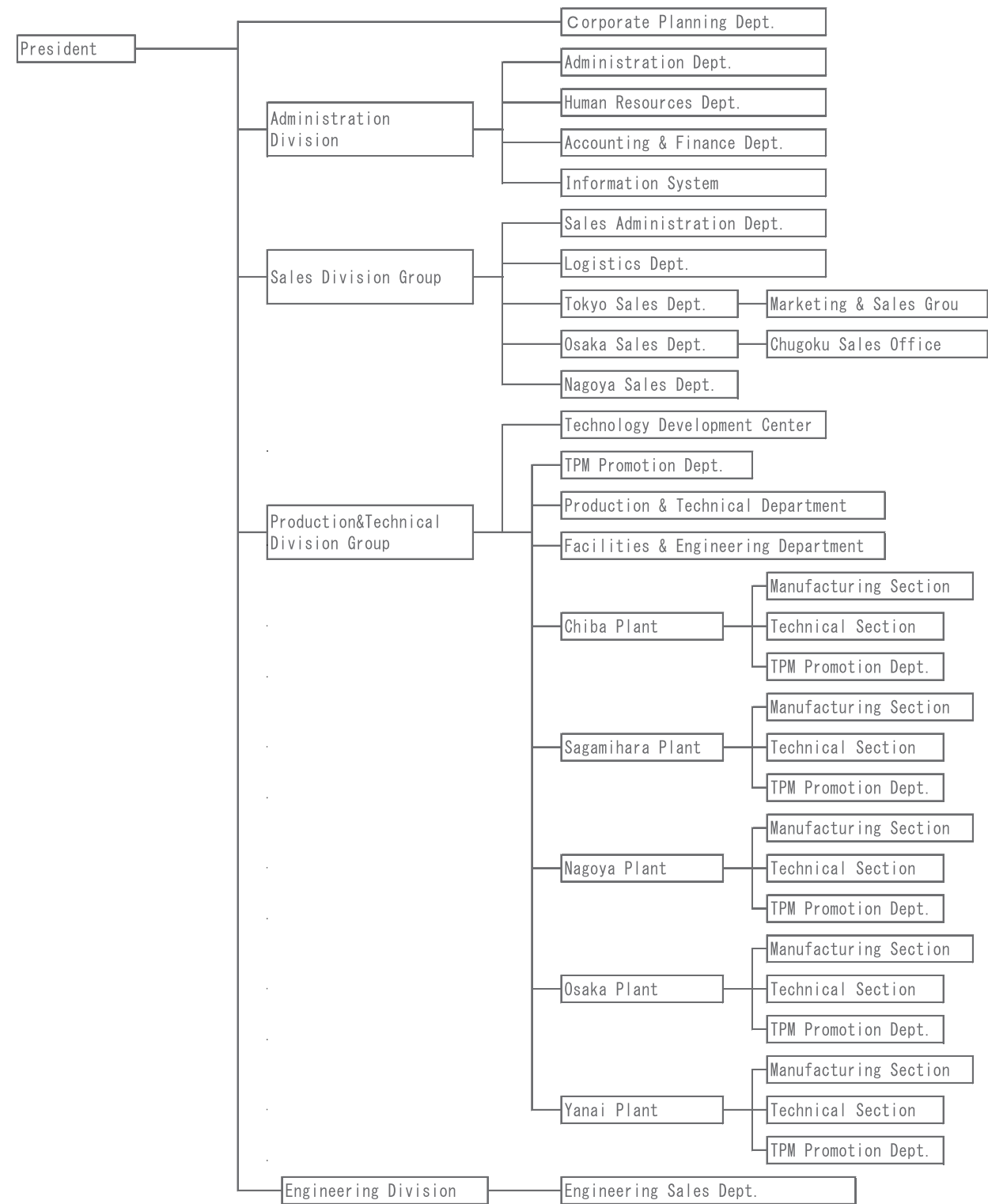


Nippon Steel Drum Co., Ltd. Company Outline



Subsidiary Companies

<div><div></div><div>Nippon Steel Drum Techno Co., Ltd.</div></div>	(Major business)
Representative Director and President Makoto Takenaka	Design, manufacture and sales of
74-1, Kotehashicho, Hanamigawa-Ku, Chiba	filling systems of containers and drum
Prefecture, Japan	manufacturing equipment
TEL (043) 298-5300 FAX (043) 298-5055	

Company Name: **NIPPON STEEL DRUM CO.,LTD.**
Head office: 5-7, 1 Chome, Kameido, Koto-Ku, Tokyo, Japan, 136-0071
TEL (03) 5627-2311 FAX (03) 5627-2323
<http://www.drum.nipponsteel.com>
U R L : 2nd of October, 1934
Established: JPY 1,654,000,000
C a p i t a l : Nippon Steel Corporation
Major stock: Manufacture and sales of steel drum
Business lines: Manufacture and sales of special receptacles such as tanks and containers
Engineering for filling and conveying system of container such as drum, 18L can and cubic container

Divisions

- Technology 7-1, 5Chome, Nishihashimoto, Midori-i-Ku, Sagamihara, Kanagawa Prefecture, Japan, 252-0131
Development Center TEL (042) 779-1395 FAX (042) 779-1390
- Sales Division Groups
 - Sales Administration Dept. 5-7, 1 Chome, Kameido, Koto-Ku, Tokyo, Japan, 136-0071
TEL (03) 5627-2312 FAX (03) 5627-2323
 - Tokyo Sales Dept. 5-7, 1 Chome, Kameido, Koto-Ku, Tokyo, Japan, 136-0071
TEL (03) 5627-2313 FAX (03) 5627-2321
 - Marketing & Sales Group 5-7, 1 Chome, Kameido, Koto-Ku, Tokyo, Japan, 136-0071
TEL (03) 5627-2314 FAX (03) 5627-2321
 - Osaka Sales Dept. 4-10, 2 Chome, Imabashi, Chuo-Ku, Osaka, Japan, 541-0042
TEL (06) 4706-0001 FAX (06) 4706-0010
 - Chugoku Sales Office 3-1-2, Minamihama, Yanai, Yamaguchi Prefecture, Japan, 742-0023
TEL (0820) 24-1136 FAX (0820) 24-1138
 - Nagoya Sales Dept. 13-18, 2 Chome, Meiekiminami, Nakamura-Ku, Nagoya, Aichi Prefecture, Japan, 450-0003
TEL (052) 565-0411 FAX (052) 565-0417
- Plant
 - Chiba Plant 13, Anesakikaigan, Ichihara, Chiba Prefecture, Japan, 299-0107
TEL (0436) 61-1291 FAX (0436) 62-4531
 - Sagamihara Plant 7-1, 5Chome, Nishihashimoto, Midori-i-Ku, Sagamihara, Kanagawa Prefecture, Japan, 252-0131
TEL (042) 772-2151 FA (042) 774-3359
 - Nagoya Plant 28-2, Shinpomachi, Tokai, Aichi Prefecture, Japan, 476-0005
TEL (052) 603-3411 FAX (052) 601-4333
 - Osaka Plant 1-21, Rinkaicho, Izumiotsu, Osaka Prefecture, Japan, 595-0075
TEL (0725) 33-6301 FAX (0725) 21-0969
 - Yanai Plant 3-1-2, Minamihama, Yanai, Yamaguchi Prefecture, Japan, 742-0023
TEL (0820) 24-1135 FAX (0820) 24-1137
- Engineering Division
 - Engineering Sales Div. 5-7, 1 Chome, Kameido, Koto-Ku, Tokyo, Japan, 136-0071
TEL (03) 5627-2315 FAX (03) 5627-2323
 - Representative Director & President Koshiro Chikamatsu
 - Managing Director, Member of the Board Tatsuya Yamashita
 - Managing Director, Member of the Board Hiroshi Matuda
 - Director, Member of the Board Kiyosumi Fujii
 - Senior Advisor
 - Director, Member of the Board Einosuke Kan
 - Corporate Auditor Renshi Itou
 - Corporate Auditor Takahiro Fujino
 - Managing Director Tetsuya Sagayama
 - Director Makoto Takenaka
 - Director Hiroyuki Magome
 - Director Terutaka Senbon
 - Director Jun Nakakubo

Main Banks MUFG Bank, Ltd.、Sumitomo Mitsui Banking Corporation

Major Customers Public agencies, Petroleum, Petroleum & Chemical, Chemical, and Foods industries and trading companies

History

- October, 1934 : Nippon Steel Drum Works Ltd. was established.
- April, 1959 : Sagamihara Plant was built in Sagamihara-shi, Kanagawa Prefecture
- April, 1964 : Tokai Steel Drum Co., Ltd. was established in Tokai-shi, Aichi Prefecture.
- April, 1968 : Kansai Steel Drum Co., Ltd. was established in Izumiotsu-shi, Osaka Prefecture.
- October, 1968 : Chiba Plant was built in Ichihara-shi, Chiba Prefecture
- April, 1973 : Kansai Steel Drum was merged and acquired by Tokai Steel Drum and the name of the Company was changed to Seitetsu Steel Drum Co., Ltd.
- July, 1973 : Tokyo Works was closed.
- October, 1974 : Seitetsu Steel Drum was merged and acquired by Nippon Steel Drum Works Ltd. The name of the Company was changed to Nippon Steel Drum Co., Ltd., and the nation wide business activities were started with its sales offices in the head office and Osaka, and four plants of Chiba, Sagamihara, Nagoya and Osaka.
- December, 1988 : Technology Development Center was established in Sagamihara Plant.
- March, 1995 : Osaka Plant acquired ISO 9002 certification, from then on, Chiba, Sagamihara, and Nagoya Plants also acquired
- September, 1995 : Nippon Steel Drum Co., Ltd was listed on the Second Section of the Tokyo Stock Exchange Market.
- September, 1998 : For the expansion of the engineering business, fully owned Nippon Steel Drum Techno Co., Ltd. was established for the design, manufacture and sales of filling system for containers that has a close relation with steel drum.
- August, 2002 : Acquired accreditation of environmental management systems (ISO14001).
- July, 2007 : NSD has become a 100% subsidiary of Nippon Steel Corp. by the share exchange procedure effected on July31, 2007. Shares of NSD were delisted on July25, 2007 accordingly.
- October, 2012 : Corporate name changed to Nippon Steel & Sumikin Drum Co., Ltd. along with Nippon Steel & Sumitomo Metal Corporation, the integrated company of the parent company, Nippon Steel Corporation and Sumitomo Metal Industries, Ltd. Name of Nippon Steel Drum Techno Co., Ltd. (100% owned subsidiary) changed to Nippon Steel & Sumikin Drum Techno Co., Ltd.
- October, 2016 : Chiba, Nagoya Plants acquired Award for TPM Excellence, Category A from Japan Institute of Plant Maintenance, from then on, Osaka, Sagamihara Plants and Sanyo Steel Drum Industry Co., Ltd. also acquired
- April, 2019 : Corporate name changed to Nippon Steel Drum Co., Ltd. along with the name change of the parent company, Nippon Steel & Sumitomo Metal Corporation to Nippon Steel Corporation, name change, Name of Nippon Steel & Sumikin Drum Techno Co., Ltd. (100% owned subsidiary) changed to Nippon Steel Drum Techno Co., Ltd.
- December, 2021 : Yanai Plant was built in Yanai-shi, Yamaguchi Prefecture
- July, 2023 : Sanyo Steel Drum Industry Co., Ltd., a fully owen subsidiary of Nippon Steel Drum Co., Ltd. was merged by Nippon Steel Drum Co., Ltd.

	Number of employees	Average age	Average length of service in years
March, 2023	250	42.6	16.2
March, 2024	280	42.5	15.8
March, 2025	286	42.7	16.5