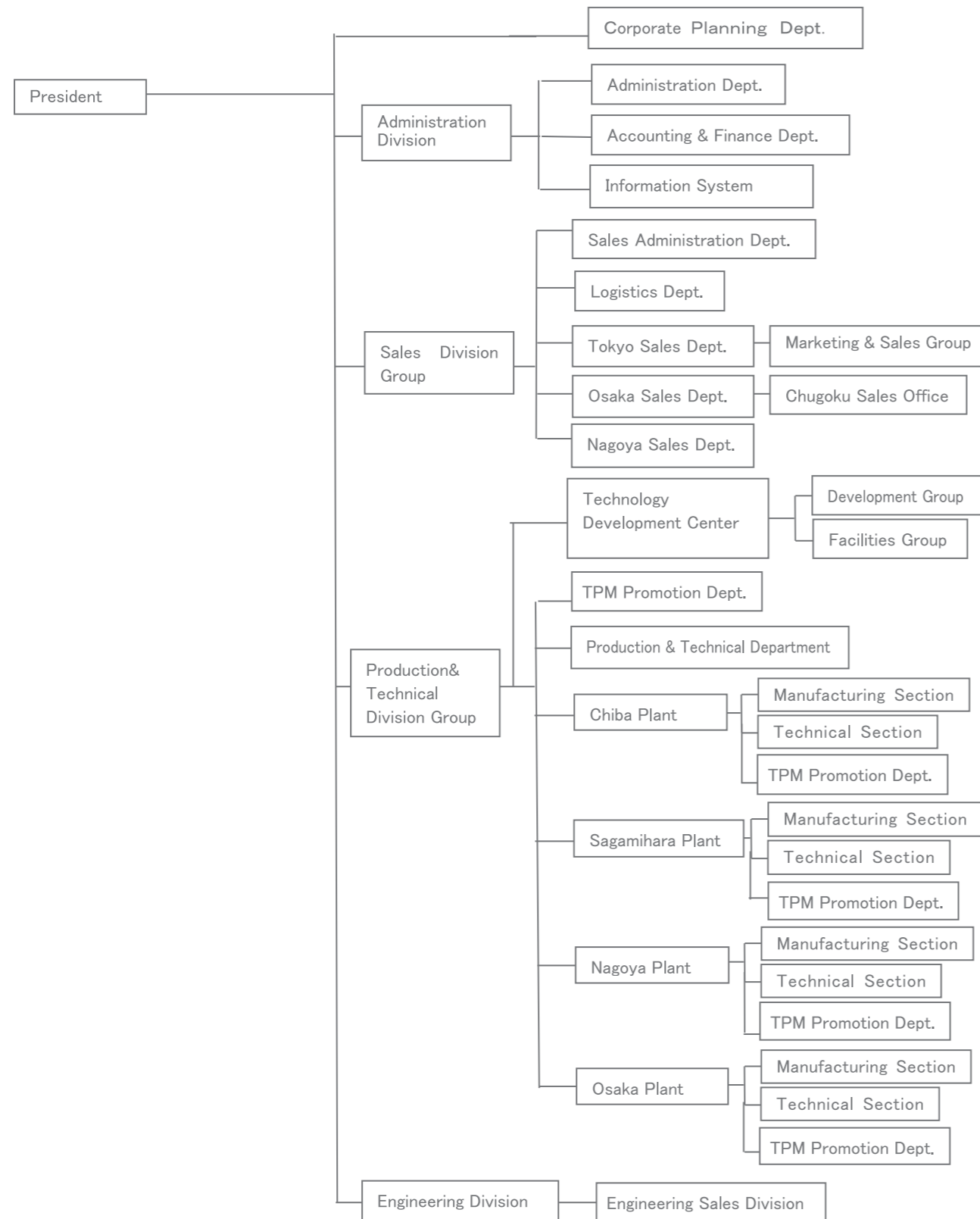


## Nippon Steel Drum Co., Ltd. Company Outline



### Subsidiary Companies

■ **Sanyo Steel Drum Industry Co., Ltd.** (Major business)  
 Representative Director and President Tsuyoshi Miyake Manufacture of steel drum  
 1230, Nakashima, Kurashiki, Okayama Prefecture, Japan  
 TEL (086) 465-3680 FAX (086) 465-3692

■ **Nippon Steel Drum Techno Co., Ltd.** (Major business)  
 Representative Director and President Masatake Watanabe Design, manufacture and sales of  
 74-1, Kotehashicho, Hanamigawa-Ku, Chiba filling systems of containers and drum  
 Prefecture, Japan manufacturing equipment  
 TEL (043) 298-5300 FAX (043) 298-5055

# Nippon Steel Drum Co., Ltd.

**Company Name:** **NIPPON STEEL DRUM CO.,LTD.**  
**Head office:** 5-7, 1 Chome, Kameido, Koto-Ku, Tokyo, Japan, 136-0071  
 TEL (03) 5627-2311 FAX (03) 5627-2323  
<http://www.drum.nipponsteel.com>  
**U R L :**  
**Established:** 2nd of October, 1934  
**Capital:** JPY 1,654,000,000  
**Major stock:** Nippon Steel Corporation  
**Business lines:** Manufacture and sales of steel drum  
 Manufacture and sales of special receptacles such as tanks and containers  
 Engineering for filling and conveying system of container such as drum, 18L can and cubic container

## Divisions

■Technology 7-1, 5Chome, Nishihashimoto, Midori-Ku, Sagamihara, Kanagawa Prefecture, Japan, 252-0131  
 Development Center TEL (042) 779-1395 FAX (042) 779-1390

■Sales Division Groups

Sales Administration Dept. 5-7, 1 Chome, Kameido, Koto-Ku, Tokyo, Japan, 136-0071  
 TEL (03) 5627-2312 FAX (03) 5627-2323

Tokyo Sales Dept. 5-7, 1 Chome, Kameido, Koto-Ku, Tokyo, Japan, 136-0071  
 TEL (03) 5627-2313 FAX (03) 5627-2321

Marketing & Sales Group 5-7, 1 Chome, Kameido, Koto-Ku, Tokyo, Japan, 136-0071  
 TEL (03) 5627-2314 FAX (03) 5627-2321

Osaka Sales Dept. 4-10, 2 Chome, Imabashi, Chuo-Ku, Osaka, Japan, 541-0042  
 TEL (06) 4706-0001 FAX (06) 4706-0010

Chugoku Sales Office 1230, Nakashima, Kurashiki, Okayama Prefecture, Japan, 710-0803  
 TEL (086) 466-5777 FAX (086) 466-5770

Nagoya Sales Dept. 13-18, 2 Chome, Meiekinami, Nakamura-Ku, Nagoya, Aichi Prefecture, Japan, 450-0003  
 TEL (052) 565-0411 FAX (052) 565-0417

■Plant

Chiba Plant 13, Anesakikaigan, Ichihara, Chiba Prefecture, Japan, 299-0107  
 TEL (0436) 61-1291 FAX (0436) 62-4531

Sagamihara Plant 7-1, 5Chome, Nishihashimoto, Midori-Ku, Sagamihara, Kanagawa Prefecture, Japan, 252-0131  
 TEL (042) 772-2151 FA (042) 774-3359

Nagoya Plant 28-2, Shinpomachi, Tokai, Aichi Prefecture, Japan, 476-0005  
 TEL (052) 603-3411 FAX (052) 601-4333

Osaka Plant 1-21, Rinkaicho, Izumiotsu, Osaka Prefecture, Japan, 595-0075  
 TEL (0725) 33-6301 FAX (0725) 21-0969

■Engineering Division

Engineering Sales Div. 5-7, 1 Chome, Kameido, Koto-Ku, Tokyo, Japan, 136-0071  
 TEL (03) 5627-2315 FAX (03) 5627-2323

Representative Director & President Kiyosumi Fujii  
 Managing Director, Member of the Board Masanori Shimada  
 Managing Director, Member of the Board Masao Wakasugi  
 Director, Member of the Board Satoru Endo  
 Corporate Auditor Hajime Mizutani  
 Corporate Auditor Shigeta Esaki  
 Managing Director Shunichi Kajiwara  
 Managing Director Masatake Watanabe  
 Director Tetsuya Sagayama  
 Director Shu Nakano  
 Director Hiroyuki Magome  
 Director Tatsuji Hamamoto  
 Director Norikazu Kanazawa  
 Director Hiroshi Nakagawa  
 Director Hitoshi Kuki  
 Director Tsuyoshi Miyake

**Main Banks** MUFG Bank, Ltd., Sumitomo Mitsui Banking Corporation

**Major Customers** Public agencies, Petroleum, Petroleum & Chemical, Chemical, and Foods industries and trading companies

## History

October, 1934 : Nippon Steel Drum Works Ltd. was established.  
 April, 1959 : Sagamihara Plant was built in Sagamihara-shi, Kanagawa Prefecture  
 April, 1964 : Tokai Steel Drum Co., Ltd. was established in Tokai-shi, Aichi Prefecture.  
 April, 1968 : Kansai Steel Drum Co., Ltd. was established in Izumiotsu-shi, Osaka Prefecture.  
 October, 1968 : Chiba Plant was built in Ichihara-shi, Chiba Prefecture  
 April, 1973 : Kansai Steel Drum was merged and acquired by Tokai Steel Drum and the name of the Company was changed to Seitetsu Steel Drum Co., Ltd.  
 July, 1973 : Tokyo Works was closed.  
 October, 1974 : Seitetsu Steel Drum was merged and acquired by Nippon Steel Drum Works Ltd. The name of the Company was changed to Nippon Steel Drum Co., Ltd., and the nation wide business activities were started with its sales offices in the head office and Osaka, and four plants of Chiba, Sagamihara, Nagoya and Osaka.  
 December, 1988 : Technology Development Center was established in Sagamihara Plant.  
 March, 1995 : Osaka Plant acquired ISO 9002 certification, from then on, Chiba, Sagamihara, and Nagoya Plants also acquired  
 September, 1995 : Nippon Steel Drum Co., Ltd was listed on the Second Section of the Tokyo Stock Exchange Market.  
 September, 1998 : For the expansion of the engineering business, fully owned Nippon Steel Drum Techno Co., Ltd. was established for the design, manufacture and sales of filling system for containers that has a close relation with steel drum.  
 August, 2002 : Acquired accreditation of environmental management systems (ISO14001).  
 July, 2007 : NSD has become a 100% subsidiary of Nippon Steel Corp. by the share exchange procedure effected on July31, 2007. Shares of NSD were delisted on July25, 2007 accordingly.  
 October, 2012 : Corporate name changed to Nippon Steel & Sumikin Drum Co., Ltd. along with Nippon Steel & Sumitomo Metal Corporation, the integrated company of the parent company, Nippon Steel Corporation and Sumitomo Metal Industries, Ltd. Name of Nippon Steel Drum Techno Co., Ltd. (100% owned subsidiary) changed to Nippon Steel & Sumikin Drum Techno Co., Ltd.  
 October, 2016 : Chiba, Nagoya Plants acquired Award for TPM Excellence, Category A from Japan Institute of Plant Maintenance, from then on, Osaka, Sagamihara Plants and Sanyo Steel Drum Industry Co., Ltd. also acquired  
 April, 2019 : Corporate name changed to Nippon Steel Drum Co., Ltd. along with the name change of the parent company, Nippon Steel & Sumitomo Metal Corporation to Nippon Steel Corporation, name change, Name of Nippon Steel & Sumikin Drum Techno Co., Ltd. (100% owned subsidiary) changed to Nippon Steel Drum Techno Co., Ltd.

	Number of employees	Average age	Average length of service in years
March, 2017	2 1 5	4 2 . 6	1 6 . 2
March, 2018	2 1 4	4 3 . 1	1 6 . 5
March, 2019	2 2 3	4 3 . 0	1 6 . 4